

Taylor's Square

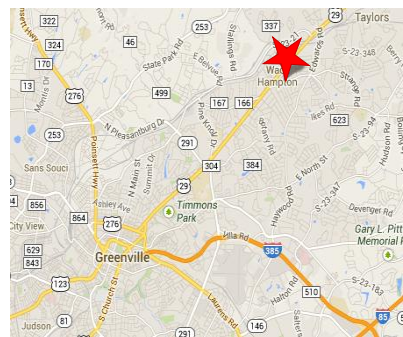
For Lease
Retail Space

3023 Wade Hampton Blvd., Taylors SC



Available

- 18.00 psf + cam, tax & insurance
- Daily Traffic Count: 34,400
- Located in front of Super Wal-Mart
- Pylon Signage Available



DEMOGRAPHICS

	1 Miles	3 Miles	5 Miles
Population	7,497	58,525	128,805
Households	3,172	23,851	52,759
Avg. Income	\$60,217	\$68,598	\$68,697

FOR MORE INFORMATION

Michael Edwards
803-400-9402
michael@dderealestate.com



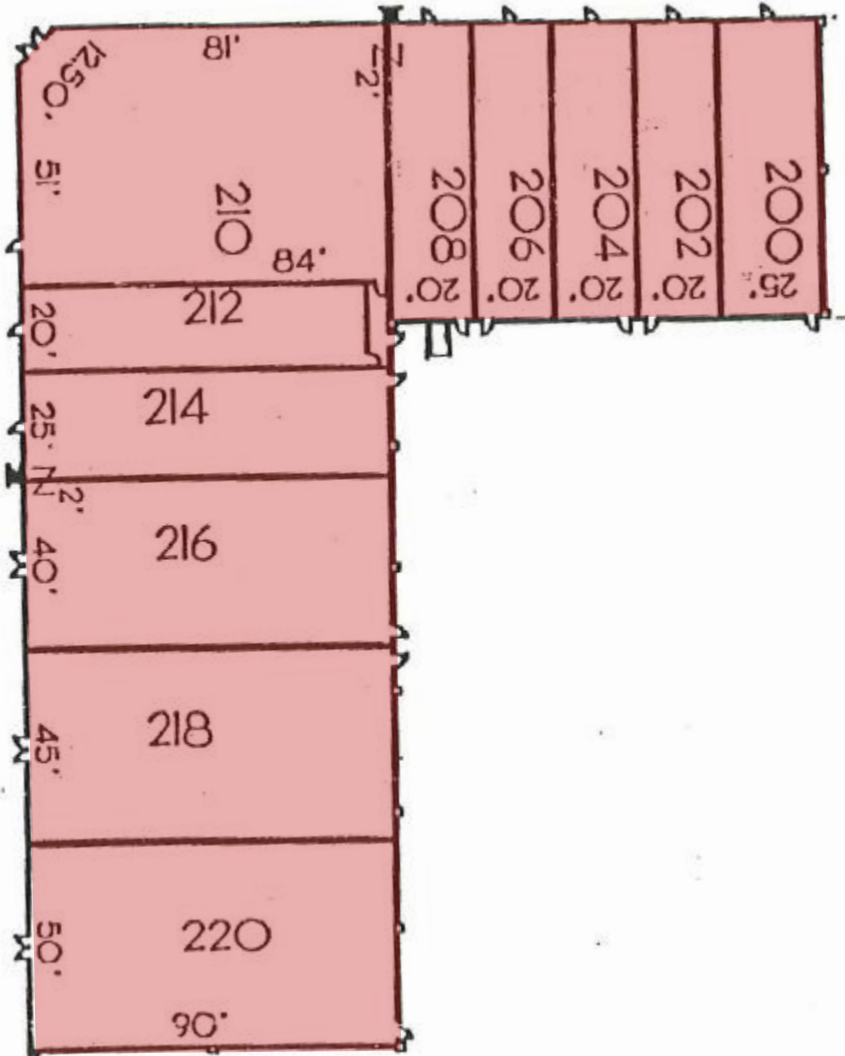
Dial, Dunlap & Edwards, LLC
COMMERCIAL REAL ESTATE

1122 Barnwell Street
Columbia, SC 29201
P: 803-799-6244
F: 803-799-4288

www.dderealestate.com

©2013 Dial, Dunlap & Edwards, LLC. The information above has been obtained from sources believed reliable. While we do not doubt its accuracy, we have not verified it and make no guarantee, warranty or representation about it. It is your responsibility to independently confirm its accuracy and completeness.

For Lease Retail Space



**Dial, Dunlap
& Edwards, LLC**

COMMERCIAL REAL ESTATE

1122 Barnwell Street
Columbia, SC 29201

P: 803-799-6244

F: 803-799-4288

www.dderealestate.com